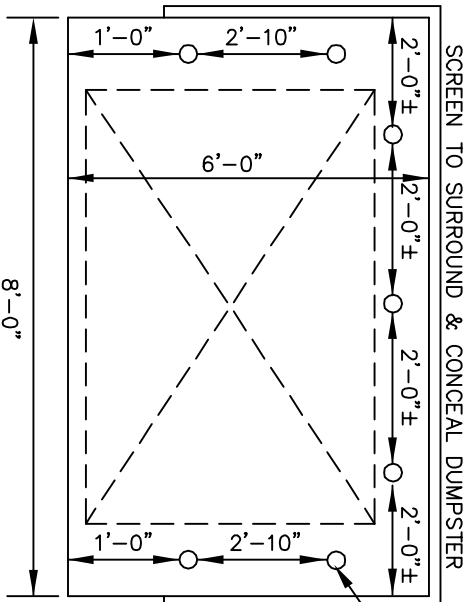
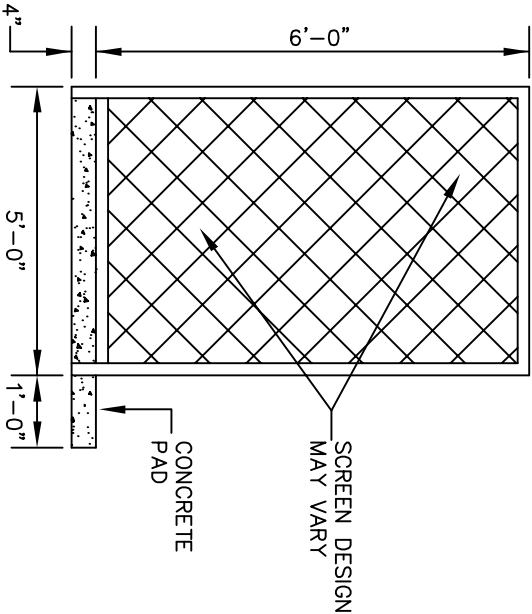


CITY OF NORTH MYRTLE BEACH STANDARD DETAILS
ENGINEERING DIVISION



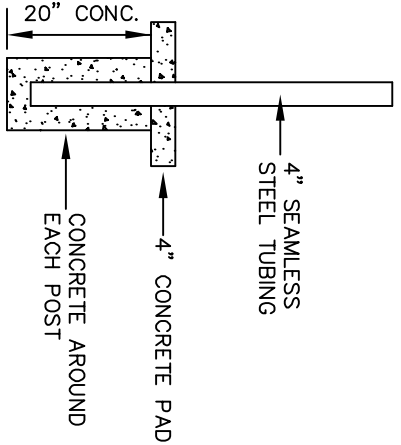
SOLID WASTE:

- SW-1 DUMPSTER PAD SIDE LOAD STYLE(NMB SERVICE)
- SW-2 TRASH COMPACTOR SITE
- SW-3 SCREEN FENCE
- SW-4 CONCRETE BUMPER
- SW-5 COMPACTING UNIT
- SW-6 DUMPSTER PAD FRONT LOAD STYLE(PRIVATE SERVICE)



ALL BUMPER POSTS TO BE SET 6" INSIDE CONC. PAD

SEVEN 4" SEAMLESS STEEL TUBING SET IN CONCRETE (SEE DETAIL BELOW)



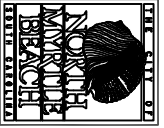
DUMPSTER PAD
SIDE LOAD STYLE
(N.M.B. SERVICE)

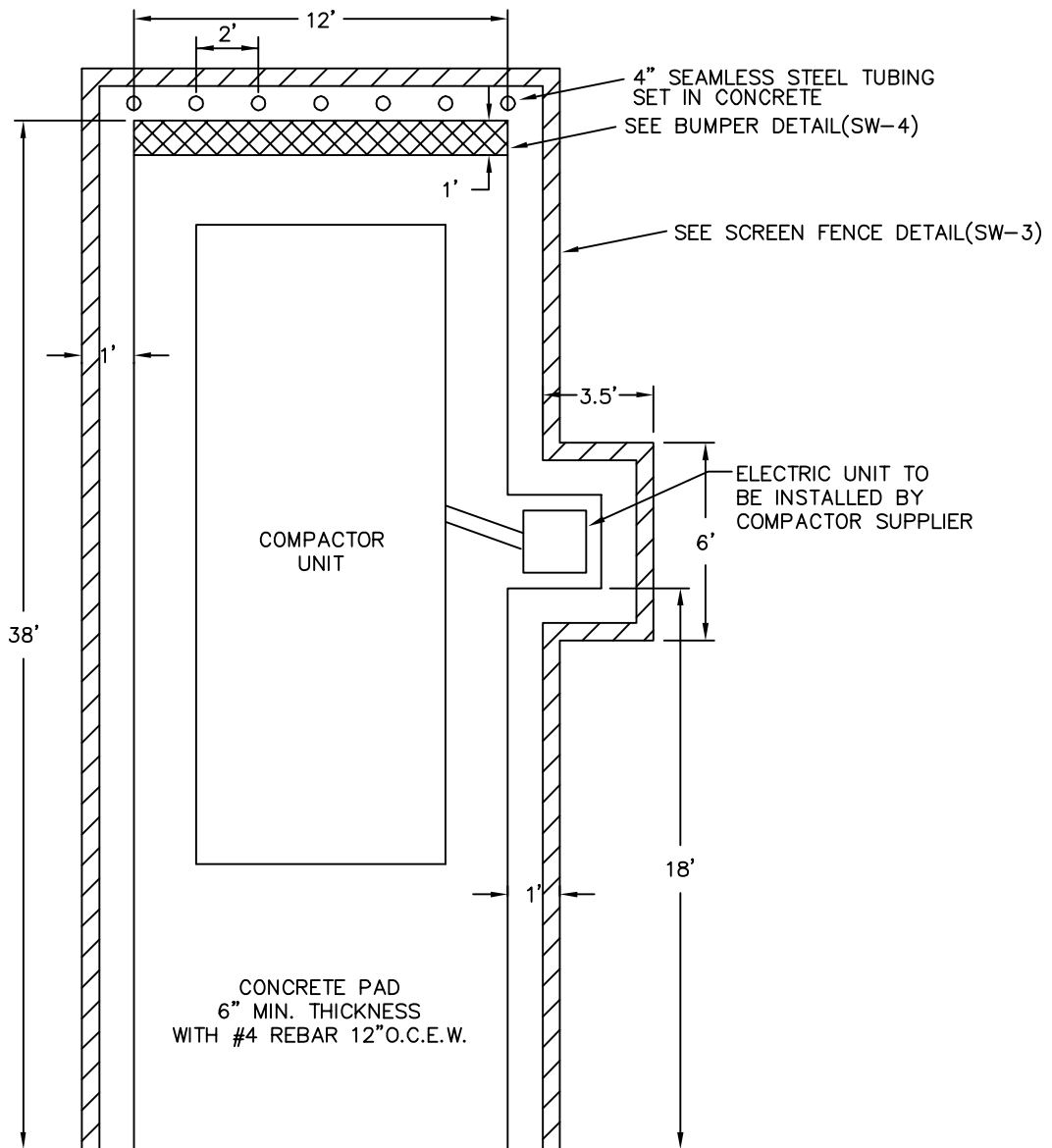
CITY OF NORTH MYRTLE BEACH
ENGINEERING DIVISION

DATE:
10/23/03

APPROVED BY: KDB
DRAWN BY: K.J.G


SHEET NO.
SW-1



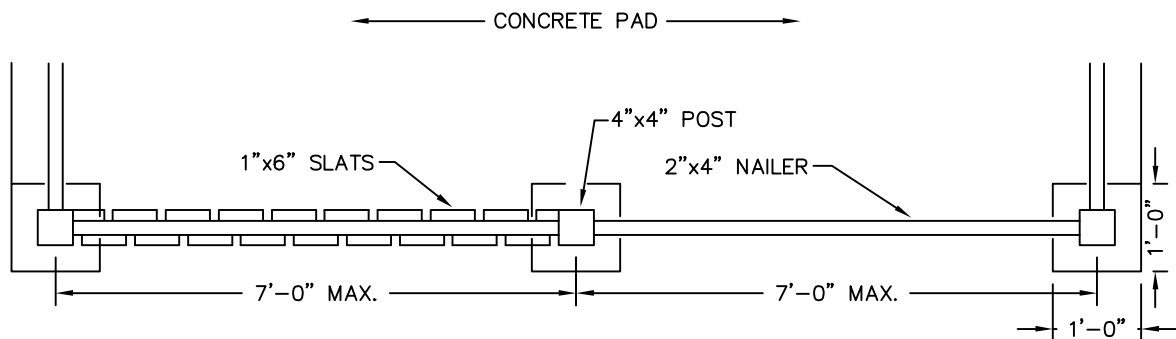


NOTES:

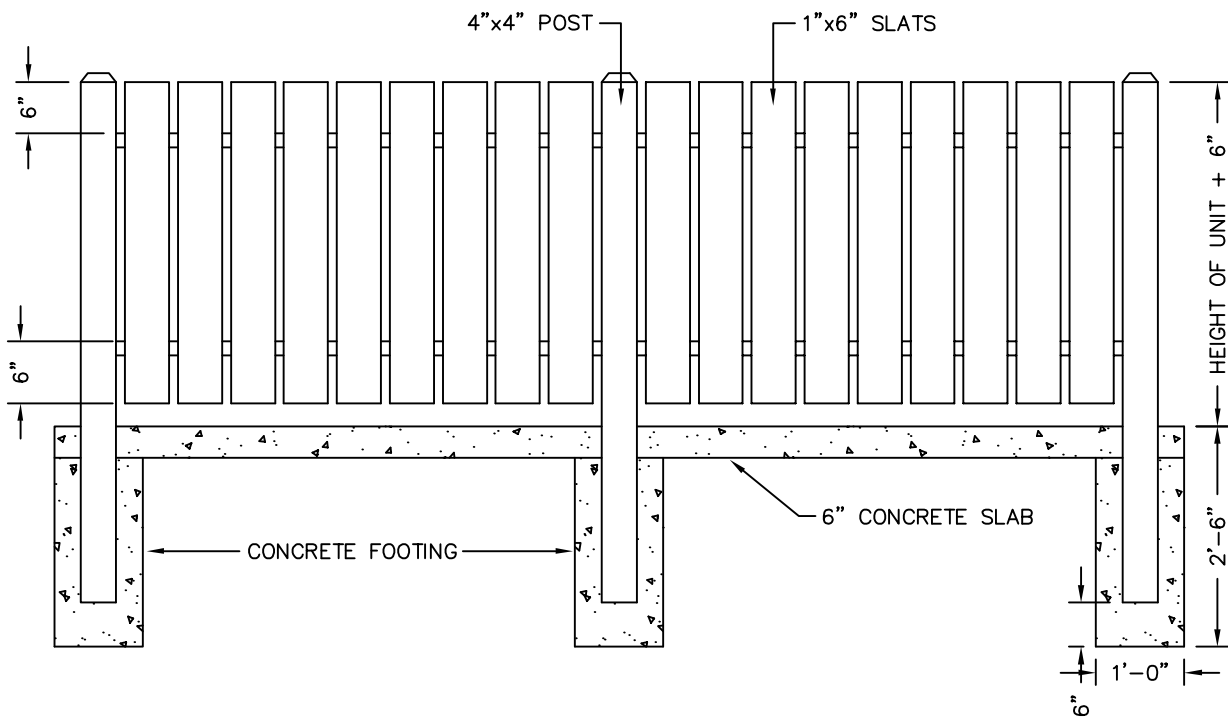
1. ELECTRIC SERVICE TO BE DETERMINED BY SIZE OF UNIT.
2. SEE LANDSCAPE REQUIREMENTS FOR USE OF PLANT MATERIAL AS SCREENING.
3. A CLEARANCE OF 24' ABOVE FRONT OF DUMPSTER IS NECESSARY.
NO OVERHEAD ELECTRIC LINES OR CABLE LINES ARE PERMITTED IN THIS AREA.
4. GREASE COLLECTORS SHALL NOT BE STORED INSIDE FENCED AREA.
5. FOR ADDITIONAL INFORMATION CONTACT THE SOLID WASTE MANAGEMENT DIVISION AT 280-5500.

TRASH COMPACTOR SITE	CITY OF NORTH MYRTLE BEACH ENGINEERING DIVISION	DATE: 10/23/03	
	APPROVED BY: KDB DRAWN BY: KJG	SHEET NO. SW-2	

SW-2.DWG




PLAN VIEW

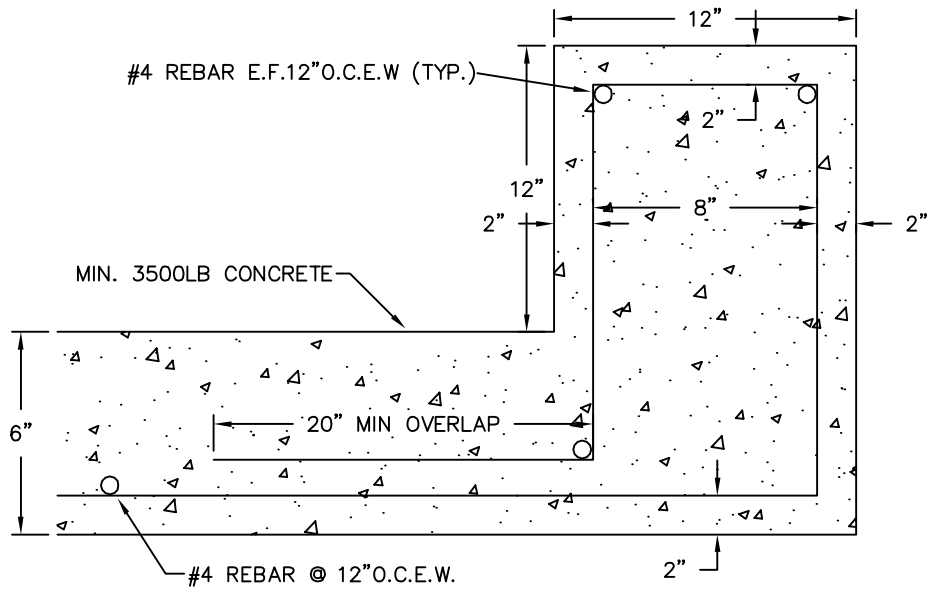


NOTES:

1. SEE LANDSCAPE REQUIREMENTS FOR USE OF PLANT MATERIAL AS SCREENING IN LIEU OF FENCING.
2. REFER TO SPECS. FOR TYPE OF FENCE MATERIAL TO BE USED.
3. FOR ADDITIONAL INFORMATION CONTACT THE SOLID WASTE MANAGEMENT DIVISION AT 280-5500.

SCREEN FENCE	CITY OF NORTH MYRTLE BEACH ENGINEERING DIVISION	DATE: 10/23/03	
	APPROVED BY: KDB DRAWN BY: KJG	SHEET NO. SW-3	

SW-3.DWG



FOR ADDITIONAL INFORMATION CONTACT THE SOLID WASTE MANAGEMENT DIVISION AT 280-5500.

CONCRETE BUMPER

CITY OF NORTH MYRTLE BEACH
ENGINEERING DIVISION

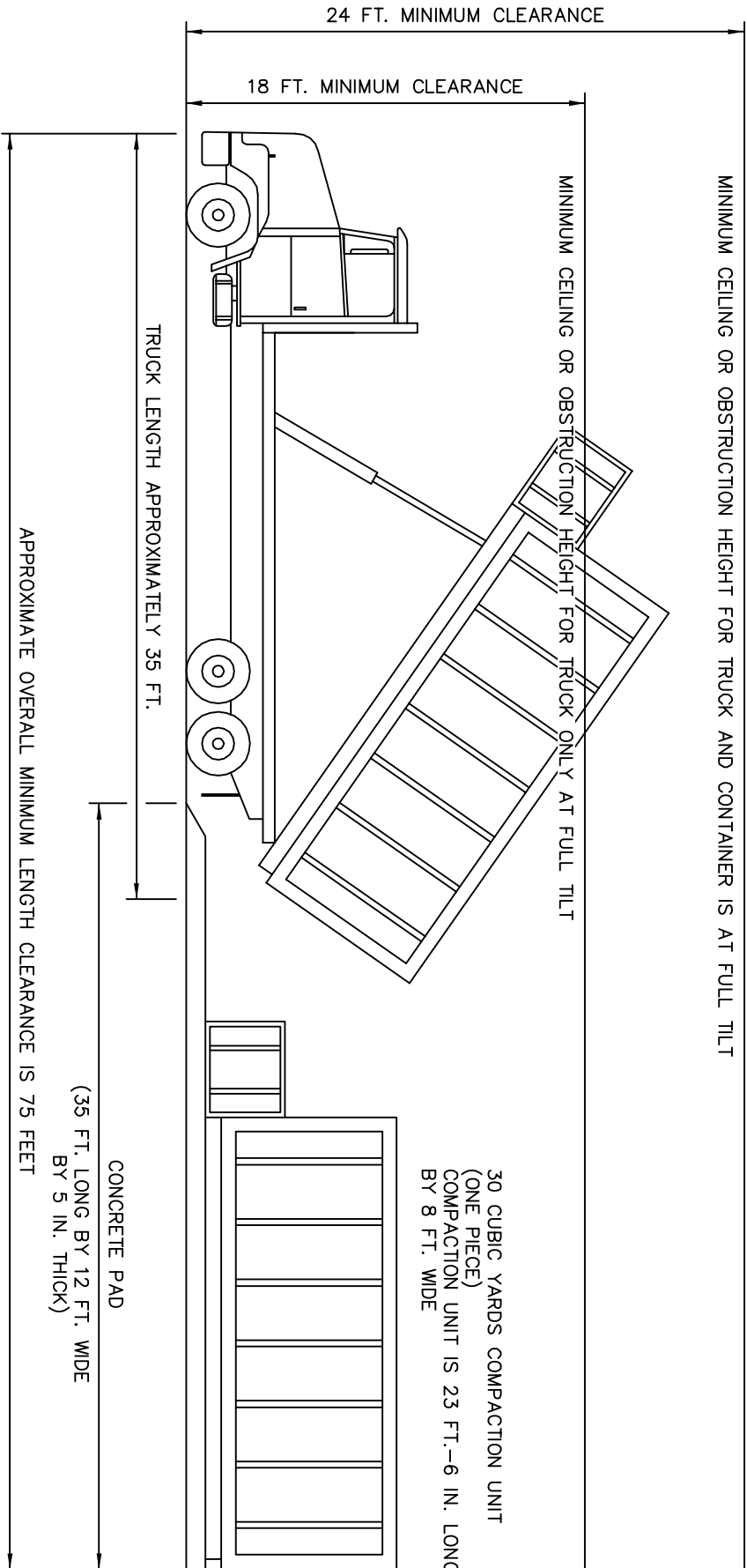
APPROVED BY: KDB
DRAWN BY: KJG

DATE:
10/23/03

SHEET NO.
SW-4



THESE SPECIFICATIONS ARE NECESSARY FOR THE INSTALLATION OF A 30 CUBIC YARD COMPACTOR UNIT ON A PLAN LAYOUT PRIOR TO SUBMITTING AN APPLICATION FOR A BUILDING PERMIT.
COMPACTOR MUST HAVE A "DOG HOUSE".
COMPACTOR MUST BE APPROVED BY THE SANITATION DIVISION.



COMPACTING UNIT

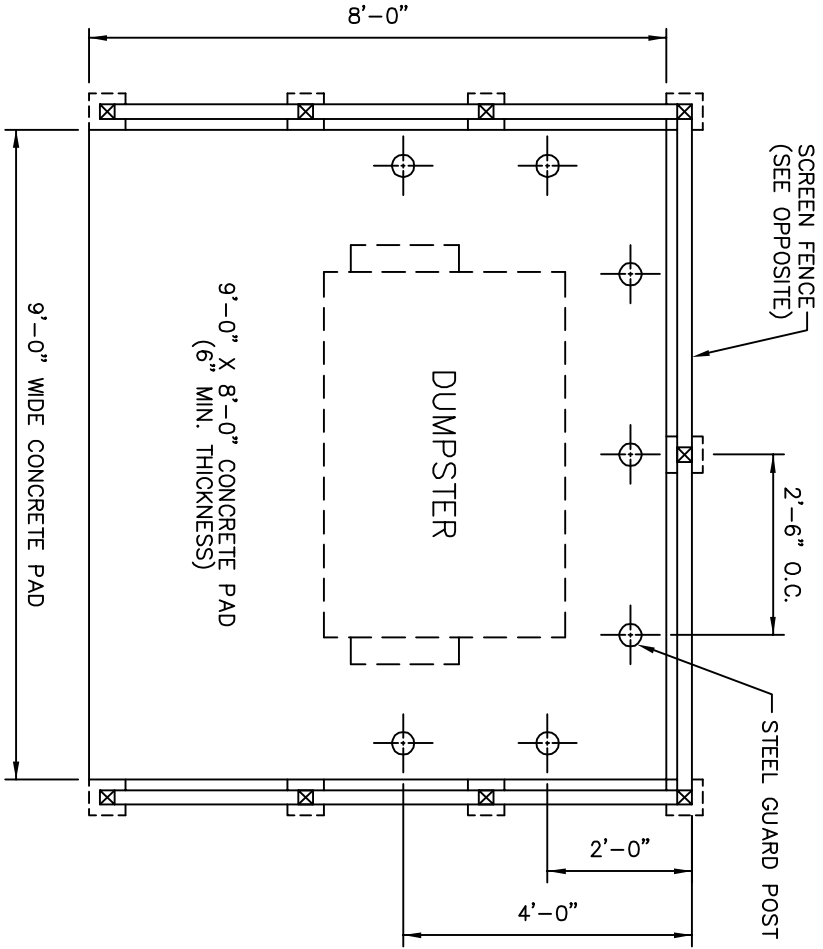
CITY OF NORTH MYRTLE BEACH
ENGINEERING DIVISION

APPROVED BY: KDB
DRAWN BY: PED

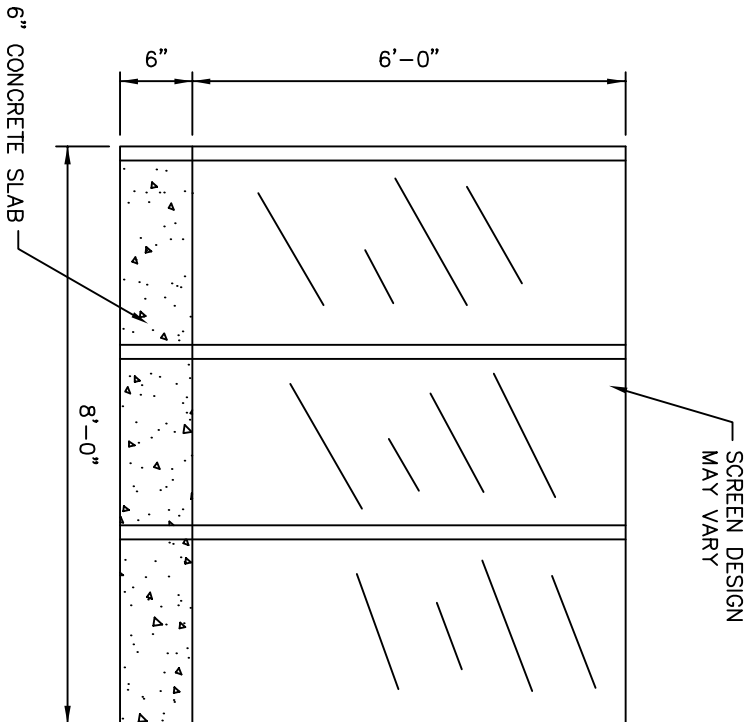
DATE:
10/23/03

SHEET NO.
SW-5





PLAN VIEW



SIDE VIEW

NOTE:
 ALL GUARD POSTS TO BE 6' TALL W/ 2' BEING BURIED IN CONCRETE. POSTS MUST BE A MINIMUM 4" DIAMETER SET IN CONCRETE FOOTER.

FRONT LOAD STYLE DUMPSTER PAD
 (PRIVATE SERVICE)

CITY OF NORTH MYRTLE BEACH
 ENGINEERING DIVISION

APPROVED BY: KDB
 DRAWN BY: PED

DATE:
 10/23/03

SHEET NO.
 SW-6

